

Product Data Sheet

PRODUCT DESCRIPTION

DEEP CURE™ is an environmentally friendly, non toxic and odourless water based compound. DEEP CURE™ penetrates into the surface of the slab and reacts with the free alkaline in the concrete forming a gel preventing the migration of water out of the slab. DEEP CURE™ is very easy to apply, using a knapsack / pump pack spray and does not change the appearance of the slab. DEEP CURE™ is a translucent water based liquid, used mostly for curing and as a moisture barrier for concrete.

DEEP CURE™ does not form a membrane. The Standard AS3799-1988 for concrete curing requires a minimum 90% water retention efficiency - DEEP CURE tested at 95.14% efficiency.

TYPICAL APPLICATIONS

- Concrete footings and pavements
- Precast concrete elements
- Balconies and concrete roof decks
- Bridges, roads and runways
- Buildings and infrastructure.

TECHNICAL INFORMATION

Vehicle Type : Water based

Viscosity : 2.4

Specific Gravity : 1.1

Drying time : 30 minutes @ 25°C.

Finish : No change to substrate

Colour : Translucent - dries clear

Theoretical Coverage : 4.5 - 5m²/litre

Freezing point : -2°C

Boiling Point : 100°C

Abrasion Resistance : Excellent

Bacterial Resistance : Excellent.

Chemical Resistance : Excellent

Heat Resistance : Up to 120°C (dry heat)

Solvent Resistance : Good

Salt Spray Resistance : Good.

Thinning and cleaning : Water

Durability : Excellent

VOC Content : None

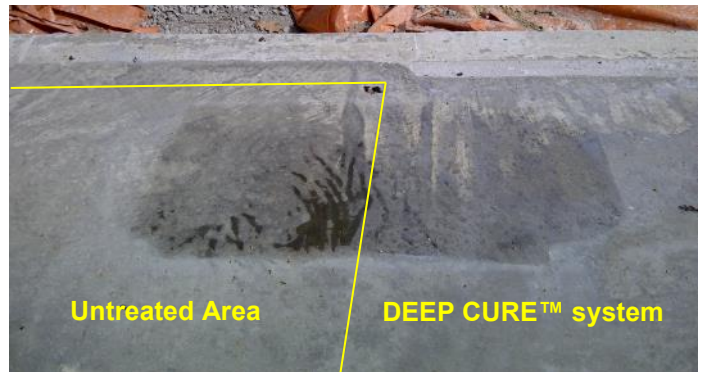
LIMITATIONS

- Apply between 5-35°C
- In hot conditions spray or mist the surface with water prior to the application of DEEP CURE™

HOW IT WORKS - (Sweat Test)



Thursday - photo shows an area not sprayed with the DEEP CURE™ system. Sprayed 5.00pm after pouring the concrete slab in the morning.



Friday (morning) - the darker area of the photo was covered with plastic, and left there over the weekend.

Monday - this photo shows where the plastic was removed and the very dark area is liquid water sitting on the surface. Water has sweated out of the untreated portion of the slab. The treated area has retained the water in the slab because the DEEP CURE™ has worked as a cure method.

MERITS

- Easy, fast and safe to apply.
- Does not leave a membrane that must to be ground off prior to applying coatings, adhesives and toppings as required in the Flooring Code
- Assists in the prevention of efflorescence.
- Hardens, densifies, dust proofs and a moisture barrier for concrete, limestone and sandstone
- Can be walked on as soon as the wet look has gone
- Cannot be damaged by tradespersons during the construction process - works in the slab, not on the slab
- Assists in the adhesion of coatings and adhesives.
- Prevents moss and mildew growth.

Product Data Sheet

APPLICATION DATA

Equipment : Non Atomizing Spray e.g. Use knapsack or backpack

Cleaning : Water

Typical Specification : One coat, however if applied over a concrete block wall or pressed pavers, 2 applications may be required due to the porosity.

SURFACE PREPARATION

All surfaces to be structurally sound and free of contamination. Oil, grease, dirt etc must be removed as this will prohibit penetration.

- **DEEP CURE**TM is best applied on the day of the concrete pour and no later than 24 hours after pour when used for curing.
- The surface of the concrete must not be burnished as this prohibits the penetration of **DEEP CURE**TM. Because **DEEP CURE**TM hardens the concrete burnishing is not required - do not use if the concrete is to be polished as it makes initial grinding difficult.
- If in doubt as to penetration, do a water droplet test. Sprinkle water on the surface of the slab, if the drops are still beaded after 90 seconds there won't be the enough penetration.
- Mix / stir thoroughly for at least 2 minutes before use using a mechanical mixer. Do not dilute, ready to use.
- Apply using a non-atomising sprayer working from the bottom up (in walls) and overlapping the spray pattern 15-20%
- Coverage is approx 6-6.5m² / litre for slabs poured that day. However the correct application rate is when there is enough applied so that the surface is still wet / glossy looking for approx 10 minutes after application.
- Squeegee any excess liquid off if it is remaining after 30 minutes after spraying.
- In hot conditions spray or mist the surface with water prior to the application of **DEEP CURE**TM. Apply between 5-35°C
- Apply coatings, adhesives etc 24 hours minimum after applying **DEEP CURE**TM. Either flush the surface clean with water or use a mechanical sander / grinder as used in standard surface preparation methods to remove any loose material before applying coatings or adhesives.
- Remove immediately any overspray on glass or aluminium by using clean water as **DEEP CURE**TM will etch the surface.

CLEAN UP

Clean all equipment after use with water. It is good work practice to periodically flush out spray equipment during the course of the working day. Frequency of cleaning will depend upon amount sprayed, temperature and elapsed time, including delays.

PACKING & STORAGE

Packing : Available in 5, 10 or 20L pails. For availability of other sizes, contact **Integra Industries**.

Storage : 10 year shelf life

HEALTH AND SAFETY

All applicable statutory regulations must be observed in the application of this product. Users must first read the Material Safety Data Sheet for **DEEP CURE**TM. Users should familiarise themselves with all the safety accepts of the product prior to usage.

Please ensure the current Technical Data Sheet is consulted prior to specification or application of **DEEP CURE**TM. If the surface intended to be treated differs from the specification, please consult the **Integra Industries** Technical team on 1800 500 803.

All surplus materials and empty containers should be disposed of in accordance with appropriate regional regulations/legislation.

Note: The figures quoted for pot life and drying/curing times are not definitive. They are dependent on site conditions, such as volume of material mixed, ambient and substrate temperatures, weather and ventilation.

DISCLAIMER Since the use and application of this product is beyond our control we cannot be held responsible for product field performance. The information presented above is the result of our considerable experience with this product but is not to be construed as a performance warranty. For additional information, phone our Customer Service Centre on **1800 500 803**.

MARCH 2023 - THIS DATA SHEET SUPERSEDES THOSE PREVIOUSLY ISSUED.