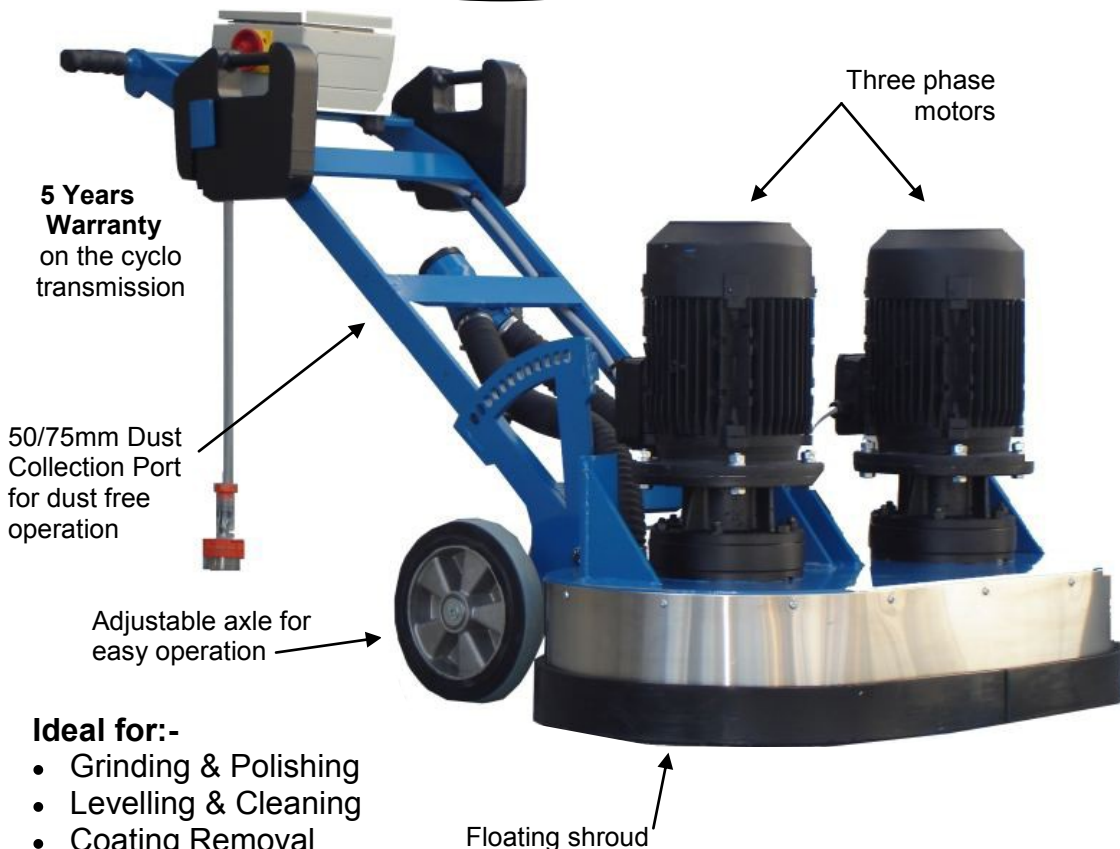


SATELLITE 970

- the heavy duty diamond grinder and concrete polisher

2 Year Warranty

Australian Made



Ideal for:-

- Grinding & Polishing
- Levelling & Cleaning
- Coating Removal
- Glue removal
- Re-surfacing
- Sanding

- **Fixed or Variable Speed** models. Ideal for either heavy grinding of fine polishing.
- **Maximum production** from this class of **415V machine**.
- **Flattens or levels floors** efficiently but will also grind a floor with a dish or shallow spoon. (Most planetary grinders will gouge floors with small undulations.)
- **High Productivity** - does not have a complex high maintenance drive system which uses up the motor power. Puts the motor into doing the job.
- **Easy to use** - with axle adjusted, the machine can be operated with only one hand!
- Uses 5" and 7" discs and plugs (6)

This is a super reliable, robust machine that is almost indestructible.

Quick disc change over - no tools!



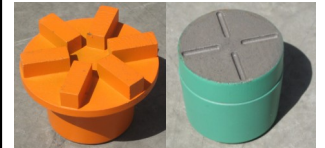
With the magnetic plug system you can change your disc tooling within seconds!

To change the plugs, use a hammer on the driver plate to release the Morse taper.

Tooling used:



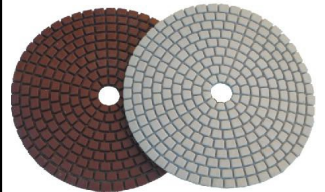
5" & 7" Cup Wheels - always use shallow dish



Turbo plug Diamond plug



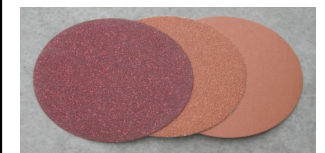
PCD plug Turbo stick



Polishing Pads



Velcro Driver Pads



Sanding Pads

TECHNICAL SPECIFICATIONS						
MODEL	POWER	RPM	WIDTH	WEIGHT	Volt/amp	m ² /hr
SAT-970	6Kw/8HP	460	970mm	360Kg	415/15	130-180
SAT-970S	6Kw/8HP	190-580	760mm	360Kg	415/15	120-170

INTEGRA

INDUSTRIES

1090 South Road EDWARDSTOWN SA 5039

Ph. 08 8177 1090 Fax. 08 8177 0336

E. sales@integraindustries.com www.integraindustries.com